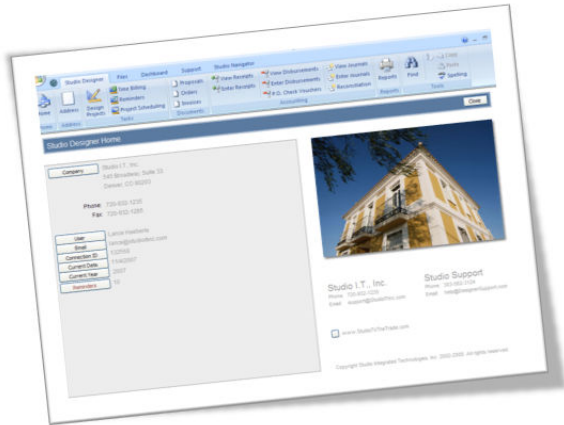


# STUDIO DESIGNER

## Studio Designer 8.0 System Requirement



November 30, 2011

### Operating System

Windows 2003 or 2008 server  
Windows XP or Windows 7

One full version of any Microsoft Office 2007 program is require to use Spell Check

### Hardware

2 GB (minimum) (RAM)  
Video card capable of displaying screen resolution of 1024 x 768  
Intel processors are recommended at a minimum of 2.4 GHz  
Network interface card (if networking is required)  
Workstations should have a cabled network connection to the server  
High speed Internet connection  
Microsoft Access 2007 is required to customize your own Studio Designer reports  
Outlook or Outlook Express is required to email  
Hard drive space requirements for the program are minimal; however, use of images requires large amounts of drive space  
Heavy use of images for inventory reports will also require a printer with internal memory available in large quantities

Individual security settings may affect the ability to install program updates and/or run the software

### **Terminal Server:**

Terminal server usage will require the email client on the server as well as MS Office for Spell Check  
Parallel printers are recommended for Terminal Server usage

### **Software:**

Continuous backups, virus scanners, or any other program that may lock files must not be allowed to run while the Studio database is in use  
If you install Access 2010, a simple command line change to your Studio Designer icon will be necessary to insure that Studio opens with Access 2007.

## **Important Considerations**

Actual requirements and product functionality may vary based on your system configuration and operating system.

A wired network should be used to insure a stable network environment. Wireless networks are not reliable and can cause data corruption.

Although Studio Designer will run on MAC with Parallels, we do not claim MAC compatibility. If installing on a MAC please expect additional support assistance from our support department at the standard Studio Support billing rate.